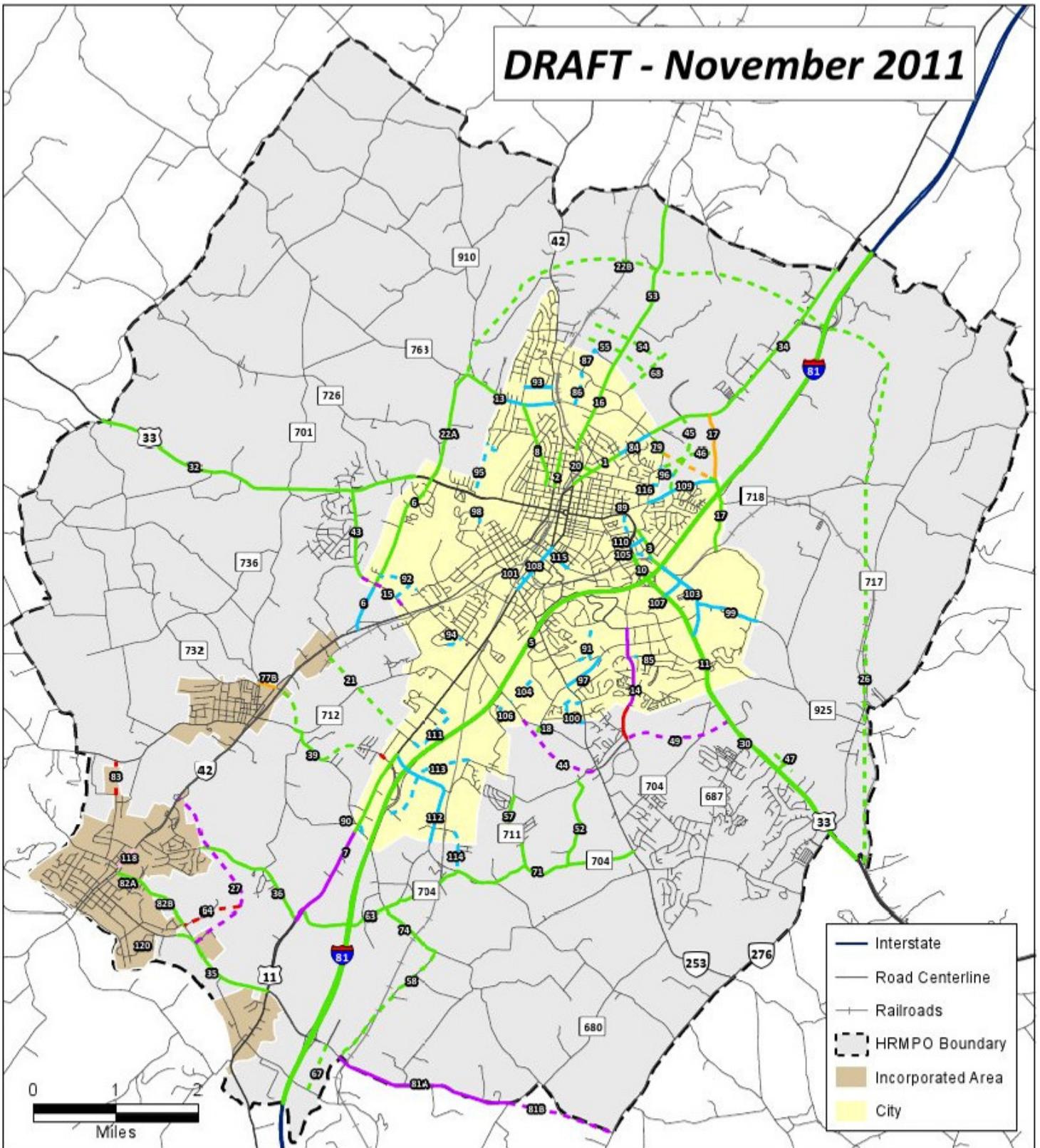
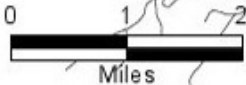


DRAFT - November 2011



- Interstate
- Road Centerline
- Railroads
- HRMPO Boundary
- Incorporated Area
- City



- Solid Line Represents Projects on Existing Roads
- Dashed Line Represents Projects on New Location
- Project appears only in 2030 Vision Plan
- Project appears in 2030 Vision Plan & locality adopted plan
- Project appears in 2030 Vision Plan, locality adopted plan, and VDOT 6-year plan
- Project appears only in locality adopted plan
- Project appears only in VDOT 6-year Plan
- Project appears in none of the above


CSPDC
 Central Piedmont Planning Council, Charlotte
 For planning purposes only.
 Source: VDOT, Rockingham County, City of Harrisonburg, and Commonwealth of VA, November, 2011.

No warranty expressed or implied is made as to accuracy, completeness, reliability, or availability of any information depicted in maps provided or produced by the CSPDC.