

JOIN US! DONATE NOW

CAP depends on charitable donations to cover the cost of our public education and outreach program.

Your generous gift will strengthen CAP's efforts to retain Rockingham County's rural character, traditional towns and agricultural economy.

Donations to CAP are tax deductible.

**YES, I would like to make a difference
in Rockingham County.**

\$30 \$100
 \$50 \$250
 \$75 other

Name: _____

Address: _____

City: _____ State: _____

Zip: _____

Email: _____

Make checks payable to:

Community Alliance for Preservation, Inc.
2879 Rawley Pike
Harrisonburg, VA 22801

Or donate online: www.preserverockingham.org



DO YOU WANT TO

Board and Staff

Board of Directors

Timothy Jost, Robert Boisture,
Bethany Versluis Fairfield,
Sara Godshall, Lee Good,
George Rohrer

Executive Director

Kim Sandum

**Protect Rockingham County's rural
character and agricultural heritage?**

**Preserve our traditional towns,
affordable public services and low taxes?**

**Retain the high quality
of life in our communities?**



CAP

2879 Rawley Pike, Harrisonburg, VA 22801
540-209-2552 • PreserveRockingham@gmail.com
www.PreserveRockingham.org

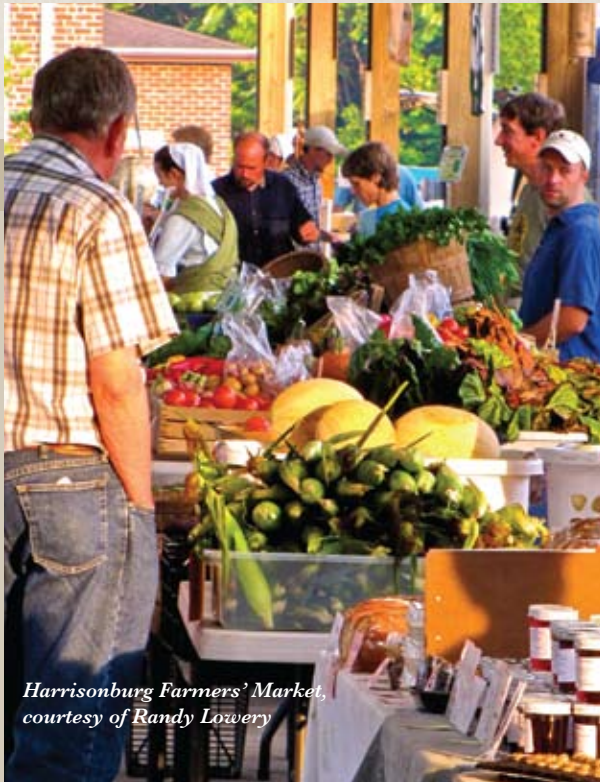
Enhancing Rockingham's rural character, livable communities and natural and cultural resources.

ABOUT US

The CAP Mission

CAP plays a unique role in Rockingham County, providing a voice for residents who value our region's rural heritage and outstanding quality of life.

CAP works with the public, elected leaders and local and state agencies to enhance Rockingham County's rural character, livable communities and natural and cultural resources.



*Harrisonburg Farmers' Market,
courtesy of Randy Lowery*

We supply timely and accurate information to promote good public policy in land use planning, land conservation, rural economic development and transportation.

We are a non-profit Virginia corporation supported by donations from individuals and charitable foundations.

Our History

CAP was formed in 1999 by citizens in the southeastern portion of Rockingham County concerned about a loop road proposal east of I-81. The proposed highway would have opened a core agricultural area and two historic Civil War battlefields to development, in direct conflict with the citizens' vision for the County.

OUR ISSUES

Preserving Rural Lands

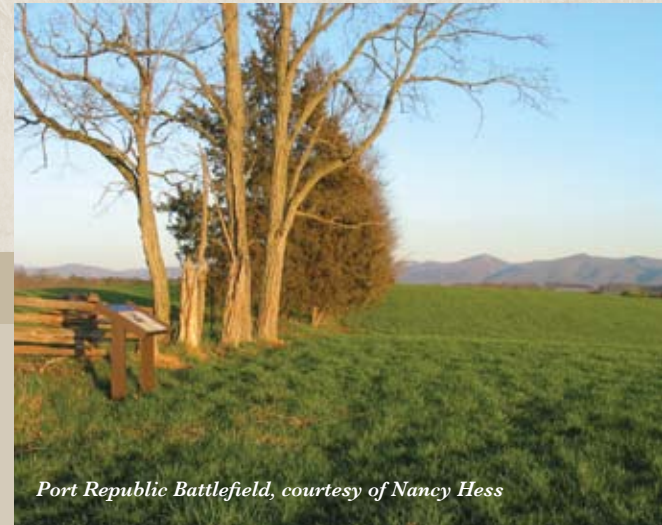
CAP supports land use planning and economic development that will preserve the many resources on which our traditional rural economic sectors – farming, forestry, tourism and recreation – depend. We encourage elected officials and local landowners to protect working lands, historic battlefields, clean water, open space and the rural landscape.

Supporting Traditional Towns

CAP supports measures to guide new growth and development to Rockingham's existing towns in ways that strengthen the quality of life in our traditional communities. Good town planning helps keep our taxes low by reducing the cost of public services and preserves the integrity of the county's farms and forests.

CAP Today

CAP's mission today has broadened to encourage public participation in land use planning, conservation and economic development strategies to protect Rockingham's rural character and quality of life.



Port Republic Battlefield, courtesy of Nancy Hess

Seeking Transportation Options

CAP scrutinizes local, regional and state transportation plans to determine the potential for negative effects on the county's rural landscape, agricultural economy and traditional towns. We promote lower cost, lower impact options for our local road networks and I-81.